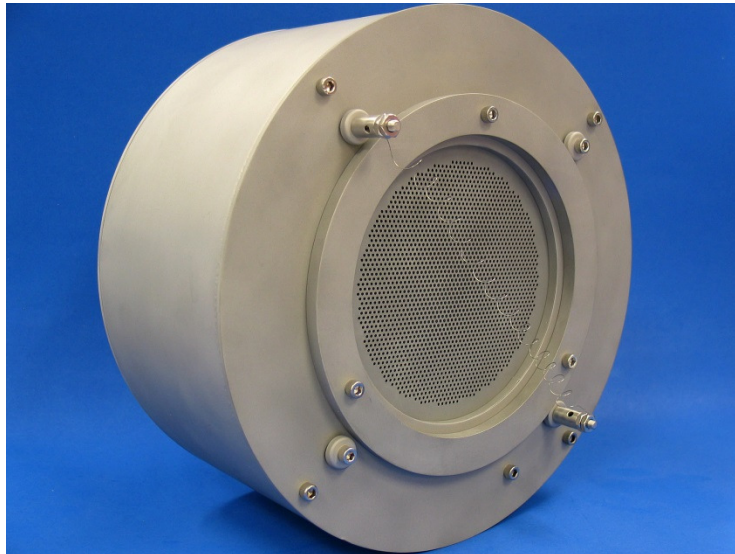




# plasma process group

## 13 cm DC Ion Beam Source



### Features

- Filament Cathode
- Filament Neutralizer or Plasma Bridge Neutralizer (PBN)
- Flange or Internal Mounting
- Versatile Power Range
- Easy Maintenance

### Applications

- Sputter Deposition
- Etching
- Ion Beam-assisted Deposition
- Materials Research
- Ion Thruster Research

### Description

Plasma Process Group offers a 13 cm DC ion beam source for use in surface modification, etching and deposition applications. The 13 cm ion beam source is ideal for small research systems, single substrate batch coating systems and also for full scale manufacturing system environments.

Our 13 cm ion beam sources have filament cathodes and can operate with a filament neutralizer or a PBN. Both choices will operate with typical process gases such as argon or nitrogen.

The 13 cm Source can be mounted to a flange for fixed beam geometry, or internally mounted for adjustable orientation. Our ion beam sources were designed with maintenance in mind, using fewer parts than previous generations of ion beam sources, making installation and maintenance much easier.

This source provides reliable, high-energy, high rate capabilities to any manufacturing process requiring DC ion sources.

*Whether you're in a research or production environment, Plasma Process Group is committed to providing you with the best support possible. Help is never more than a phone call away (or email if you prefer). Our people have many years of experience with ion beam sources, systems, and applications, and we're happy to share that with you. Give us a call.*

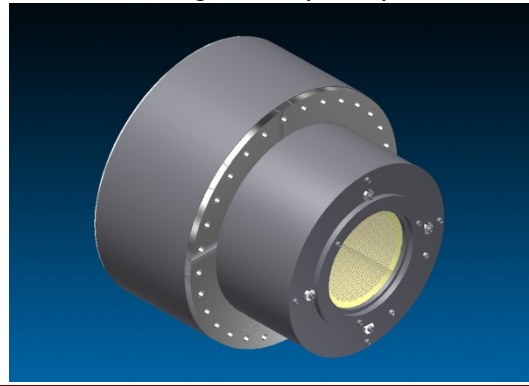
## Specifications

## 13 cm Source

Internal Mount (with PBN)

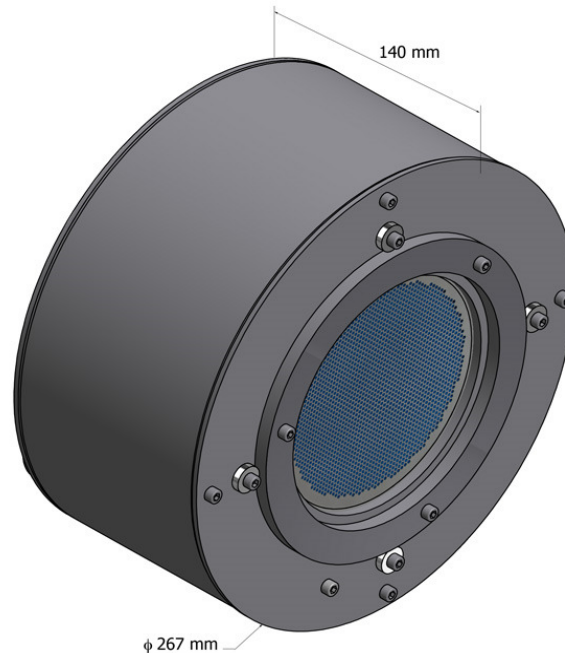


Flange Mount (14" CF)



Ion source	13 cm DC
Model number	13DC11
Beam size at grids	13 cm
Beam current	50-500 mA
Beam energy	100-1500 eV
Grid material	Molybdenum or Pyrolytic Graphite
Beam neutralization	Filament or PBN
Cooling	Water-Cooled Shroud
Power supply	I-BEAM™ 601 or I-BEAM™ 602
Weight	7.7 Kg, (17 lbs.)

### Dimensions



**Ordering Information:** 13 cm ion beam sources are available with options such as internal or flange mounting kits to facilitate installation. Please contact us to configure your ion source.

### Suggested Accessories:

IBEAM 601 or IBEAM 602  
505261A  
505260A

I-BEAM™ 601 FC/FN Power Supply or I-BEAM™ 602 FC/PBN Power Supply  
Molybdenum 3-grid assembly, 25 cm Focal Point, Divergent for 13 cm Ion Source  
14" Conflat Flange Mount Interface Kit for 13cm DC Ion Source



Simple Ion Beam Solutions

7330 Greendale Rd.  
Windsor, CO 80550 USA  
phone 970-663-6988  
fax 970-669-2312

[www.plasmaprocessgroup.com](http://www.plasmaprocessgroup.com)  
[info@plasmaprocessgroup.com](mailto:info@plasmaprocessgroup.com)